



CCTV & Security Distributor

AC-200TCP Operation Instruction

1. When connected with network, the green light will turn on for several seconds and then turns off; next, Lights for POWER and 100M LINK turn on, which indicates the network is ready.
2. Start the **software** → **setup converter**, then refresh, the IP address will be displayed. (as shown in Figure 1)

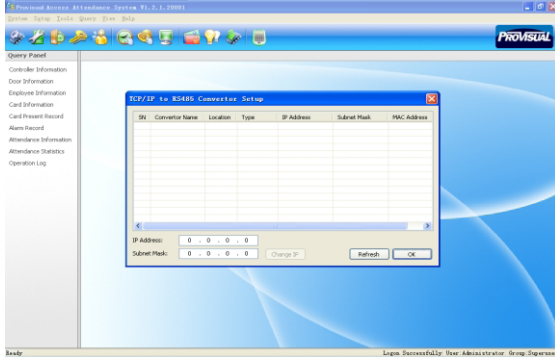


Figure 1



Figure 2

3. Change IP address
Click on the IP address and change the IP as you want in the popup box. Refresh after 5 seconds and the New IP Address is changed.
4. Double click the IP address shown. Following box will pop up: (as shown in Figure 2)
Input both username and password as "Admin"
5. Once enter, change parameters as shown below in case communication between converter and controller is 485 mode (please make sure the jumpers in both the controller and converter are in position of 485 mode). Please change as following;
6. Main Menu, Serial type, a sheet pops up: (as shown in Figure 3)

Serial Port Setup	
Serial Type	RS232
Baud Rate	9600 0 (User Defined)
Data Bits	8
Parity Check	None
Stop Bits	1
Flow Control	None
Force Packet Transmit Time	0 (0 - 65535)ms
Force Packet Transmit Length	0 (0 - 65535)bytes
Delimiter 1	0x00 (HEX) <input type="radio"/> Enable <input checked="" type="radio"/> Disable
Delimiter 2	0x00 (HEX) <input type="radio"/> Enable <input checked="" type="radio"/> Disable
RS485 Transmission Delay Time	20 (0 - 65535)us <i>Note: for RS485 only</i>

Figure 3

7. Change TCP/IP address
Serial Type : **RS485**;
Baud Rate : **9600** (please ensure to select 9600 (default setup) in the controller);
RS485 Transmission Delay: **20 seconds**;
Other parameters: **as default**
8. Click "Apply" and close. Then you can find the controller in the software by: **Setup / controller**.