

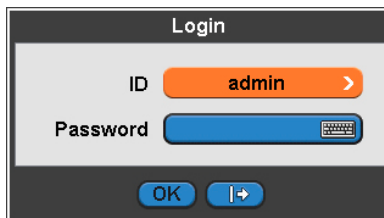
Hard Drive installation guide for DVR ES/FS/H/OD Series:

- 1- Connect the HDD Serial-ATA to the SATA1 Port in the board of the DVR. If you need to connect two Hard Drives, the second one must be connected to the SATA2 Port in the board. Never connect any hard drive in the Serial-ATA port # 3 because this port is for exclusive use of the CD/DVD RW (The CD/DVD Burner must Serial-ATA too.) and Turn ON the DVR.
- 2- The DVR will format the hard drive during the booting process automatically but that doesn't mean that the hard drive(s) is (are) ready to start recording.
- 3- When the booting process is done the DVR will show you the next message in the main screen:

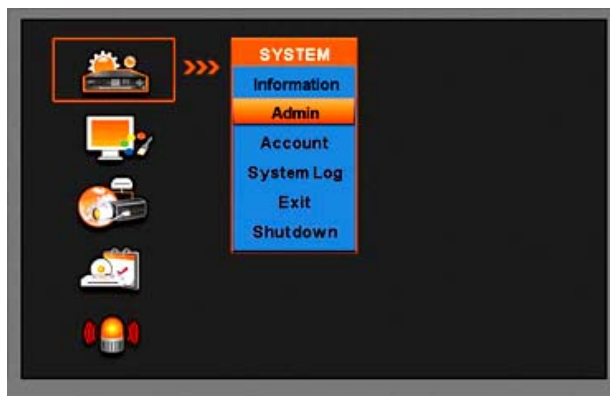
HDD(s) are relocated!

Confirm in setup for recording!

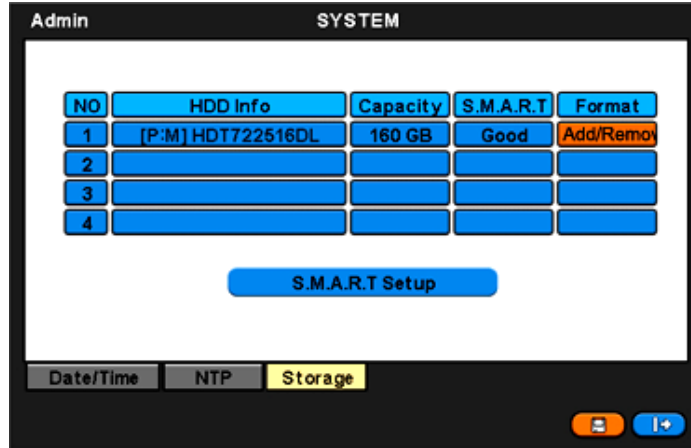
- 4- Click in the ok button (**OK**) or press (**ENTER**) in your Manual Remote Control.
- 5- Now go to the MENU of the DVR by pressing the tools button on your Manual Remote Control or right click with the mouse anywhere on the screen and select **Setup** on the list.
- 6- Now type the password to access inside the menu of the DVR. By default the **ID** is **admin** and the **Password** is **1111**.



- 7- Now select **Admin** in the menu that appears:



- 8- Select the button **Storage** using your Manual Remote Control or your mouse to go to the HDD table Information inside the **SYSTEM**:



- 9- Now select the option **Add/Remove** that appears in the **Format** column and press enter in your Manual Remote Control or just click if you are working with a mouse.
- 10- After you select the option the DVR will prompt if you want to format the hard drive, just click OK or press enter in your Manual Remote Control.
- 11- When the DVR ends the format of the hard drive it will reboot.
- 12- Wait until the booting process is done. Once the booting process is finished the dvr is ready to start recording.
- 13- Select the recording options that fit your needs and enjoy.