

## How to upgrade the DVR = Series

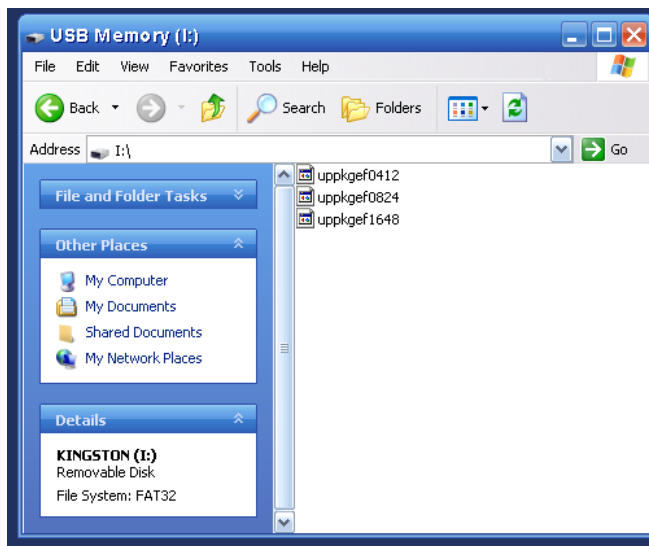
Use a standard USB Memory so save the files. **Picture 01**

**Picture 01**



Download the files from the website and copy the files inside the USB directly (Do not create a folder inside the USB and copy the files; it doesn't work). **Picture 02:**

**Picture 02**



Connect the USB Memory to the USB Port in the front panel of your DVR ES, FS, H, FH and OD like **Picture 03** or **Picture 04:**

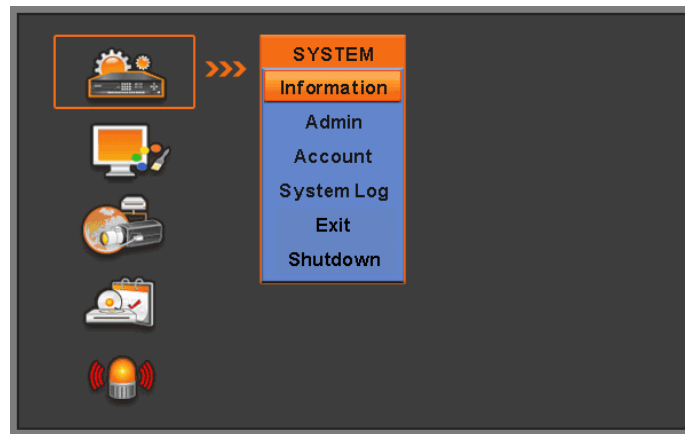


**Picture 03**



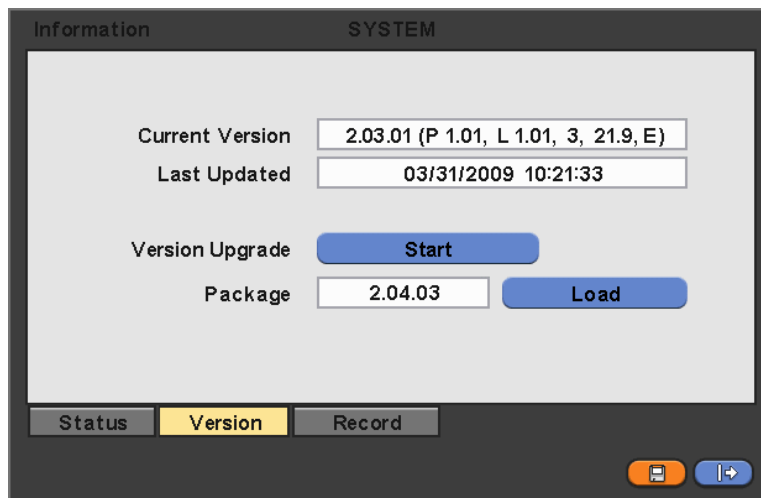
**Picture 04**

Go to the main menu of your DVR and press **SYSTEM**, and then **Information** like the **picture 05**:



Picture 05

Now in the new screen press the button **Version** and then press the button **Load**. When the new version is load and in the dialog box right next to **Package** shows the new version, press the button **Start**. The upgrade progress will start showing you a progress bar with the percent of completion and when it's done a new little panel will pop up with the message **Upgrade Successfully**; just press **OK** and the DVR will restart. Wait until the DVR complete the restart process and when it's done the full process is complete. The picture below (**Picture 06**) represents the menu inside the **SYSTEM** with the upgrade options of the DVR:



Picture 06

**Important Note:** If the DVR goes to frozen mode and stops during the upgrade process, restart the DVR by unplugging the power cable and reconnecting the power cable back and once again run the upgrade to complete the upgrade process correctly. This happens because sometimes the firmware version in the DVR is much lower than the new upgrade.